

DB9 FEMALE 9PIN TO SCREW TERMINAL CONNECTOR MODULE



ILLUSTRATION



ACCESSORIES



SIZE



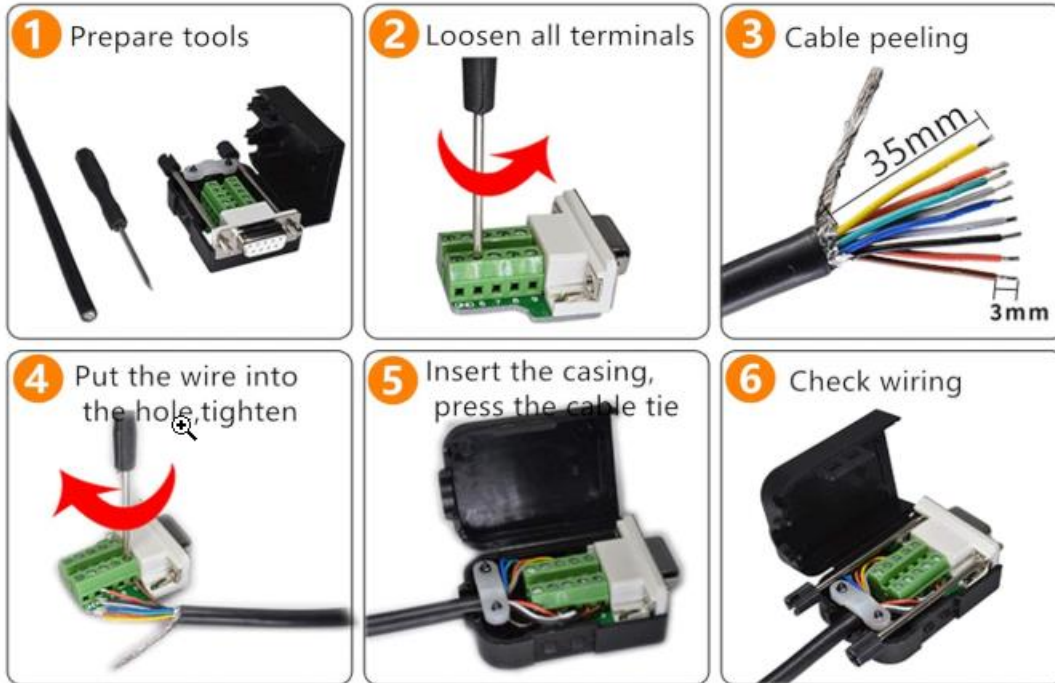
APPLICATIONS

Applications



WIRING GUIDE

Wiring Guide



Finished product
(for reference)



DETAILS



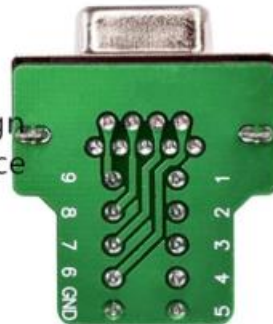
- ① The housing is made of precision molds and is similar to the general DB9 plug.

- ② Stable structural design,
Anti-drop
Compression



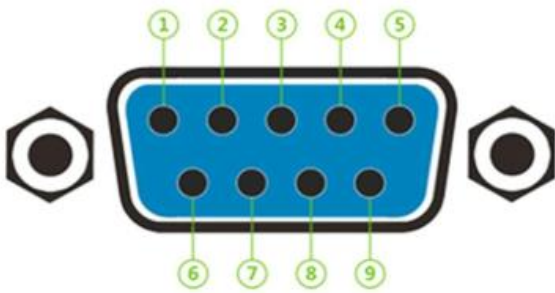
- ③ Diameter 10mm,
Suitable for common DB9 lines

- ④ Double layer circuit design,
Prevent signal interference

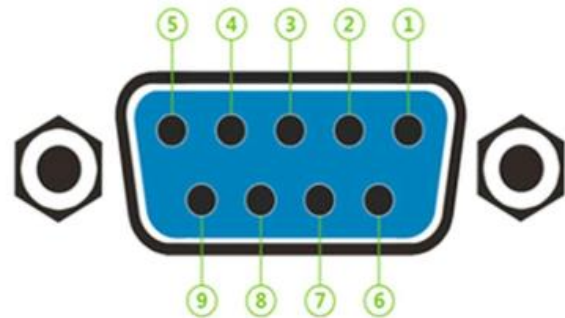


- ⑤ Solderless
Convenient
Durable

PINOUTS



DB9 Male (9 Pins)



DB9 Female (9 holes)

Number	Name
1	DCD(Data Carrier Detect)
2	RXD (Received Data)
3	TXD (Trasmitted Data)
4	DTR (Rata Terminal Ready)
5	GND (Signal Ground)
6	DSR (Data Send Ready)
7	RTS (Request to Send)
8	CTS (Clear to Send)
9	RI (Ring Indicator)