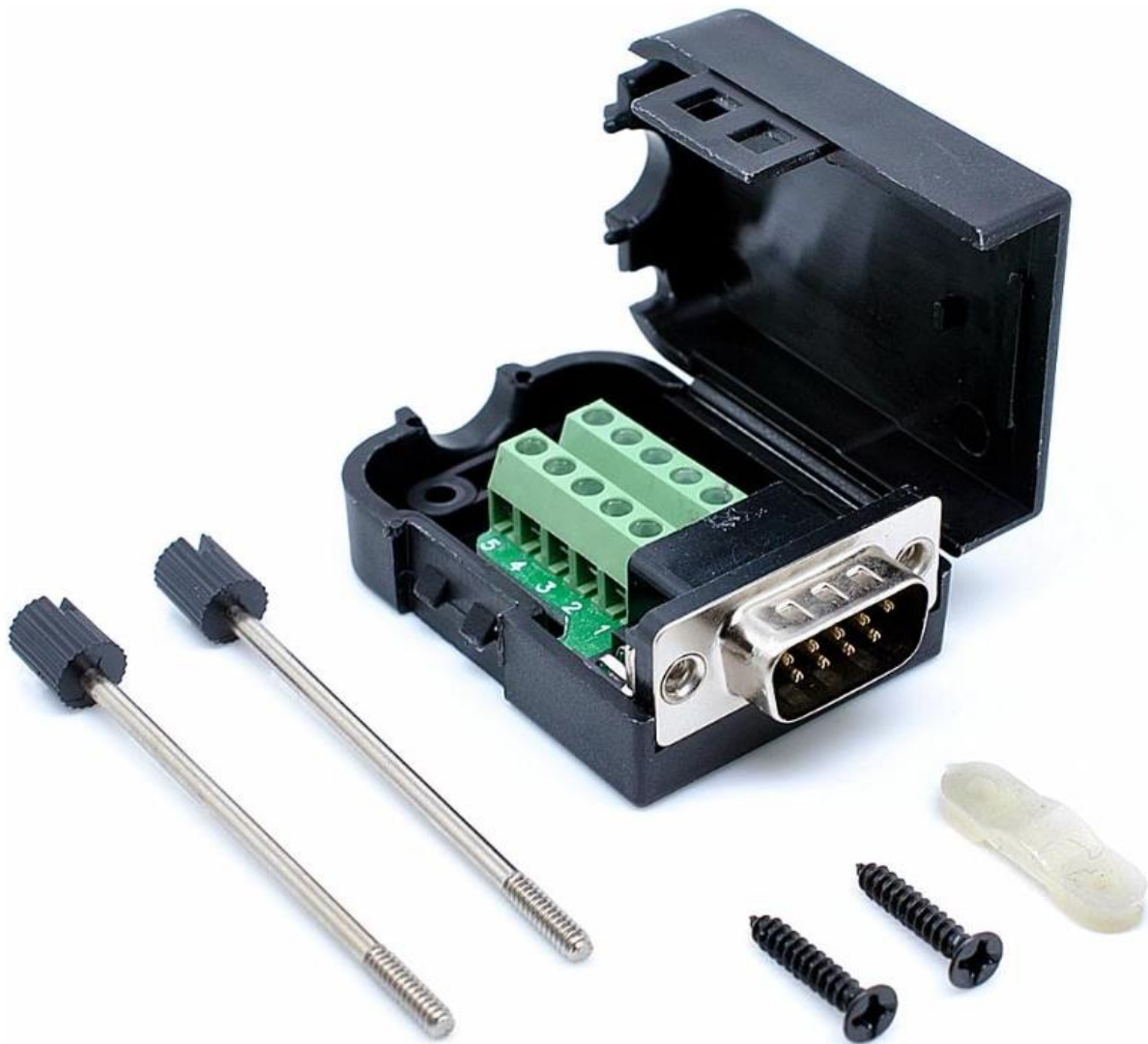


# DB9 MALE 9PIN TO SCREW TERMINAL CONNECTOR MODULE



# ILLUSTRATION



## ACCESSORIES



## SIZE



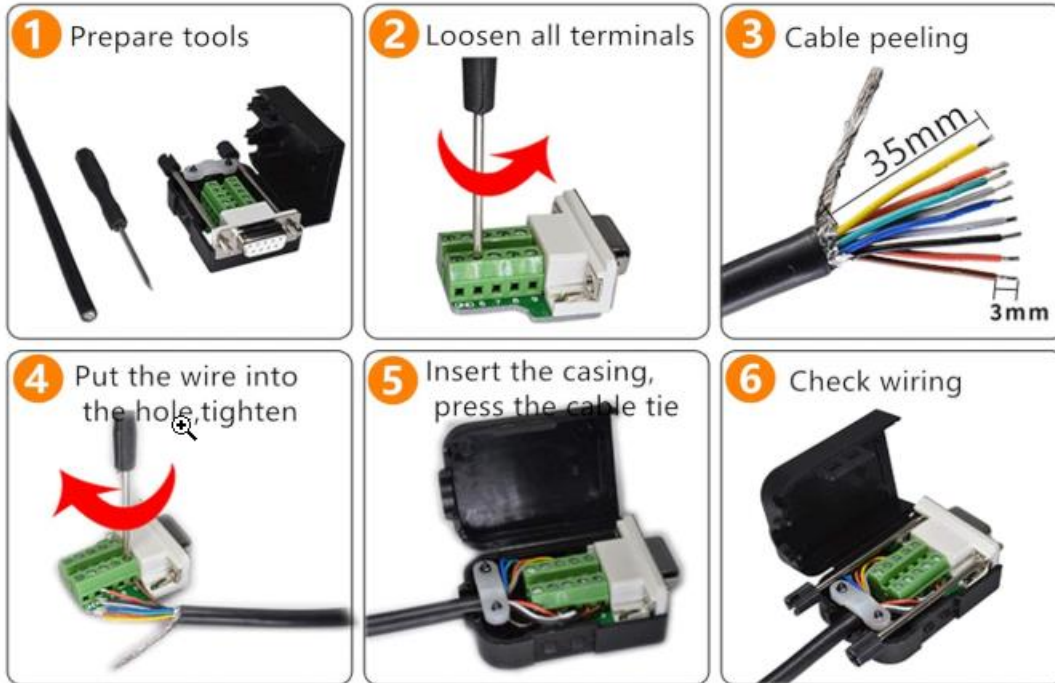
# APPLICATIONS

## Applications



# WIRING GUIDE

## Wiring Guide



Finished product  
(for reference)





# DETAILS



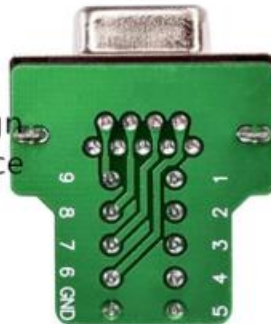
- ① The housing is made of precision molds and is similar to the general DB9 plug.

- ② Stable structural design,  
Anti-drop  
Compression



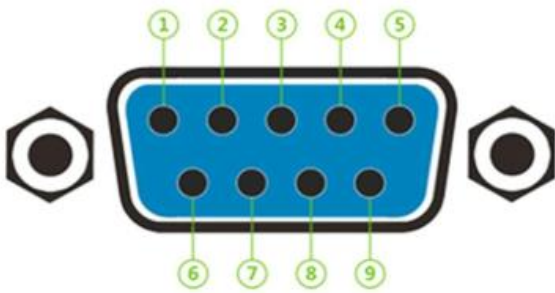
- ③ Diameter 10mm,  
Suitable for common DB9 lines

- ④ Double layer circuit design,  
Prevent signal interference

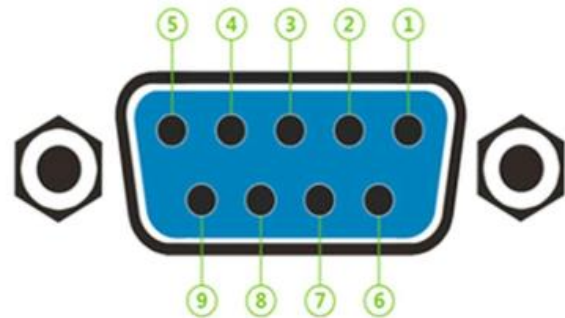


- ⑤ Solderless  
Convenient  
Durable

# PINOUTS



DB9 Male (9 Pins)



DB9 Female (9 holes)

Number	Name
1	DCD(Data Carrier Detect)
2	RXD (Received Data)
3	TXD (Trasmitted Data)
4	DTR (Rata Terminal Ready)
5	GND (Signal Ground)
6	DSR (Data Send Ready)
7	RTS (Request to Send)
8	CTS (Clear to Send)
9	RI (Ring Indicator)